



August - 2016 (FOR RELEASE: September 06, 2016 - 6 am EST)

The ISM - Southeast Michigan Purchasing Managers Index (PMI) at 66.0 ↑

ISM-SEM Index: In August the PMI popped back up to 66.0, the highest reading in the six months shown. The 3 month average is rose from 58.1 to 60.1, and has shown stability throughout the summer.

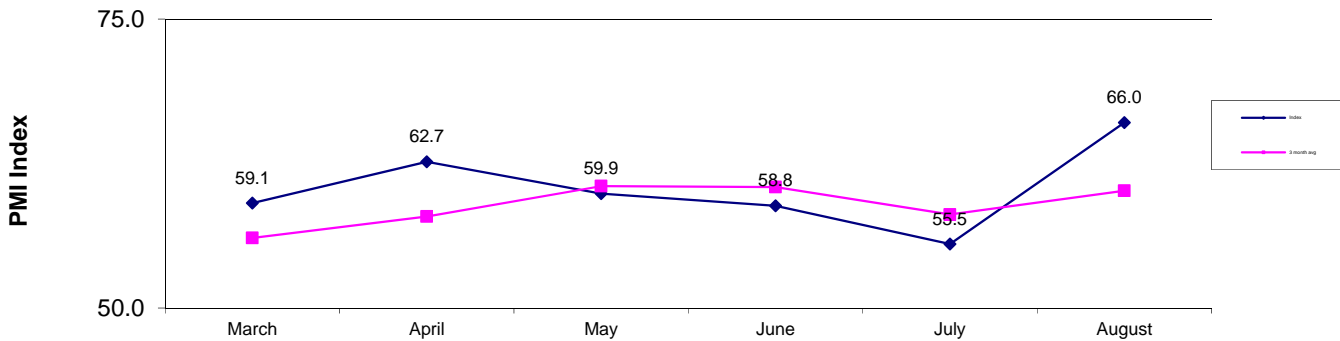
Employment: The Employment index rose significantly, from 64.3 to 70.8. This is the second time this summer the index was above 70. In March, the reading was 75.0. The three month average is actually went down by a point and a half, from 65.7 to 64.3.

Commodity Prices: The Commodity Price index dropped back to 50.0, the same reading as for March and April. However, with readings above 60 in May and July, it's difficult to determine what this is telling us. The 3 month average shows more stability, but also went down from 59.7 to 56.0.

Items up or down in price:

Economic Issues: *The August survey shows as shown below*

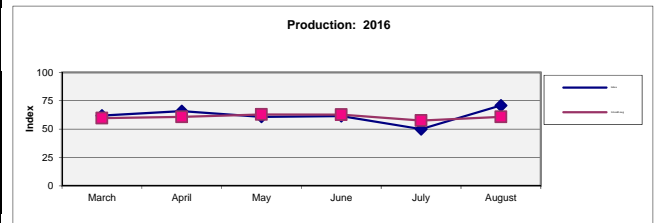
Southeast Michigan Index: 2015 - 16



ISM-SEM Index		2016					
		March	April	May	June	July	August
Index		59.1	62.7	59.9	58.8	55.5	66.0
Index	3 month average	56.1	57.9	60.5	60.5	58.1	60.1

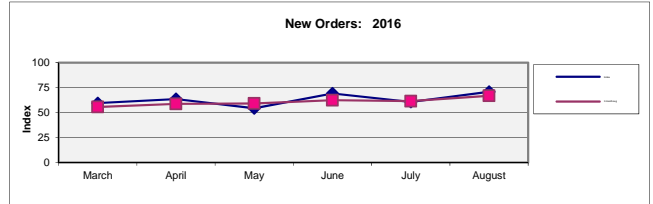
Production		2016					
		March	April	May	June	July	August
	Higher	38.1	40.9	34.8	38.5	14.3	50.0
	Same	47.6	50.0	52.2	46.2	71.4	41.7
	Lower	14.3	9.1	13.0	15.4	14.3	8.3
Index		61.9	65.9	60.9	61.5	50.0	70.8
Index	3 month average	59.7	60.8	62.9	62.8	57.5	60.8

Production ...



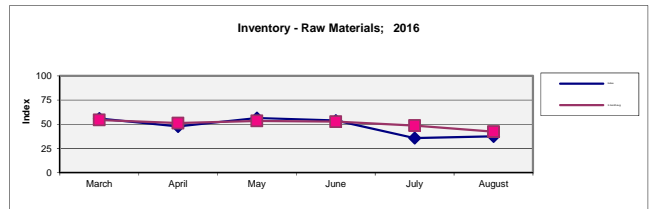
New Orders		2016					
		March	April	May	June	July	August
	Higher	35.7	40.9	30.4	46.2	35.7	50.0
	Same	47.6	45.5	47.8	46.2	50.0	41.7
	Lower	16.7	13.6	21.7	7.7	14.3	8.3
Index		59.5	63.6	54.3	69.2	60.7	70.8
Index	3 month average	55.6	58.8	59.2	62.4	61.4	66.9

New orders ...



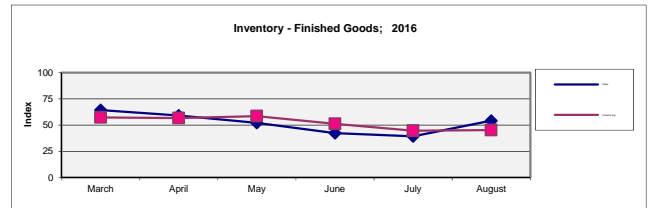
Inventory - Raw Materials		2016					
		March	April	May	June	July	August
	Higher	28.6	13.6	21.7	23.1	0.0	8.3
	Same	54.8	68.2	69.6	61.5	71.4	58.3
	Lower	16.7	18.2	8.7	15.4	28.6	33.3
Index		56.0	47.7	56.5	53.8	35.7	37.5
Index	3 month average	54.5	51.2	53.4	52.7	48.7	42.4

Raw materials inventories ...



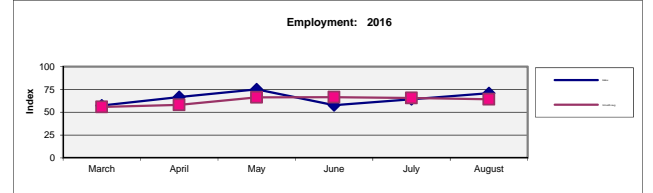
Inventory - Finished Goods		2016					
		March	April	May	June	July	August
	Higher	42.9	22.7	13.0	7.7	0.0	25.0
	Same	42.9	72.7	78.3	69.2	78.6	58.3
	Lower	14.3	4.5	8.7	23.1	21.4	16.7
Index		64.3	59.1	52.2	42.3	39.3	54.2
Index	3 month average	57.3	56.8	58.5	51.2	44.6	45.3

Finished goods inventories ...



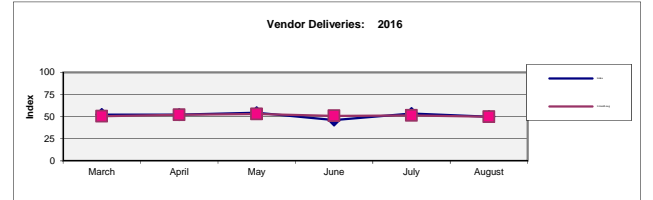
Employment		2016					
		March	April	May	June	July	August
	Higher	29.3	42.9	50.0	23.1	28.6	41.7
	Same	56.1	47.6	50.0	69.2	71.4	58.3
	Lower	14.6	9.5	0.0	7.7	0.0	0.0
Index		57.3	66.7	75.0	57.7	64.3	70.8
Index	3 month average	55.8	58.0	66.3	66.5	65.7	64.3

Employment ...



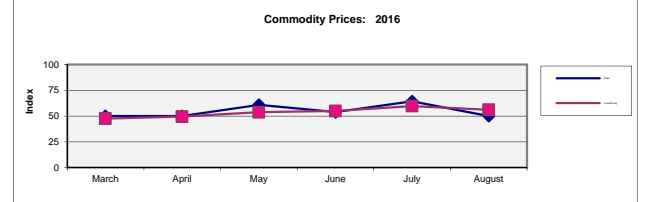
Vendor Deliveries		2016					
		March	April	May	June	July	August
	Faster	11.9	9.1	4.3	7.7	0.0	0.0
	Same	71.4	77.3	82.6	92.3	92.9	100.0
	Slower	16.7	13.6	13.0	0.0	7.1	0.0
Index		52.4	52.3	54.3	46.2	53.6	50.0
Index	3 month average	50.5	52.1	53.0	50.9	51.4	49.9

Deliveries ...



Commodity Prices		2016					
		March	April	May	June	July	August
	Higher	14.3	13.6	21.7	7.7	35.7	0.0
	Same	71.4	72.7	78.3	92.3	57.1	100.0
	Lower	14.3	13.6	0.0	0.0	7.1	0.0
Index		50.0	50.0	60.9	53.8	64.3	50.0
Index	3 month average	47.5	49.5	53.6	54.9	59.7	56.0

Commodity prices ...

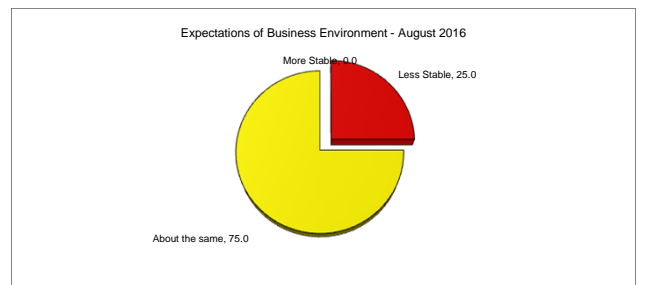


Expectations of Business Environment - August 2016

6 months into the future:

Less Stable	25.0	percent
About the same	75.0	percent
More Stable	0.0	percent

For more information about the Survey or to obtain copies of previous surveys, visit our website at www.ism-sem.org and click on "Economic Surveys"



NOTICE:

No warranty, expressed or implied, is attached to these figures or their use. While the figures are compiled with professional care, no representations about appropriateness, accuracy, or suitability for specific applications are made.

Survey Results Production by:
Kenneth Doherty & Steve Welsh of ISM.

Next Release: **October 03, 2016**

For more information, contact
ISM - Southeast Michigan
Email: businessmanager@ism-sem.org
Tel: 313-881-0800

OR
Wayne State University
Timothy Butler
timothy.butler@wayne.edu
Tel: 313-577-9810

OR
Nitin Paranjpe
ai8668@wayne.edu
Tel: 248-292-0208